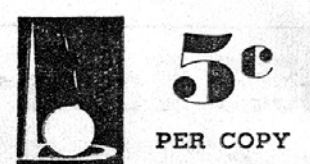


Keep Posted on what-
where-when things are
happening in the Fair
Grounds in TODAY
AT THE FAIR

TODAY AT THE FAIR



OFFICIAL DAILY PROGRAM OF THE NEW YORK WORLD'S FAIR 1939

Complete News and Pictures... Published Every Day... Sunday, July 2, 1939... No. 61

Vermont Governor Flys to Fair

Plan Temple Laywomen's Retreat

Catholic World
Editor Makes
Address

An elaborate program has been arranged in the Temple of Religion this evening by the National Laywomen's Retreat Movement, featuring an address by the Rev. James M. Gillis, editor of the Catholic World.

Greetings are being extended to the Laywomen by Rt. Rev. Monseigneur John T. Clarke, dean of the Catholic clergy in Queens. Mgr. Clarke is acting as the personal representative of the Most Reverend Thomas E. Malloy, Bishop of Brooklyn, whose diocese includes the borough of Queens.

The Paulist Choir under the direction of Father Finn is adding a musical note to the program. The Choir is singing Franck's beloved "Ave Maria." Assisted by a soloist, James Welch, they are presenting the "Salve Regina" by Waddington.

The National Laywomen's Re-
(Please Turn to Page Two)

WELCOME FLYING GOVERIOR



Wm. E. J. Irish, manager of the Vermont Exhibit at the Fair, with Virginia North and Ruth Twohey, the charming hostesses who welcome visitors to the "Green Mountain" State's exhibit.

Gov. George A. Aiken Arrives In Private Plane To Open State's Fair Exhibit

Belying Vermont's reputation for ultra-conservatism, Governor George D. Aiken is breaking precedents and flying in his private plane from Vermont's capital to the World's Fair to dedicate the Vermont Exhibit.

The dedication highlights a day of festivities marking the celebration of the "Green Mountain" State's Day at the Fair.

Featuring the celebration is the appearance at the Fair of the much discussed Vermont Symphony Orchestra. This unique group of musicians, now in its second year, is the only symphony orchestra in the nation that is sponsored by state government.

The appearance of the orchestra at the Fair is the first time it has played outside the Green Mountain State. Vermonters are anxiously awaiting the critical response of the cosmopolitan audience at the Fair, and of metropolitan music-lovers and critics.

Allen Carter, organizer and conductor of the orchestra, has received the cooperation of the New York union musicians in bringing this group to the Fair. A letter received from the Associated Musicians of Greater New York, Local 802, A. F. of L., removed all objection and cleared

the way for the occasion.

Company K of the Vermont National Guard is acting as the Governor's Guard of Honor at the Dedication ceremony at Vermont's Exhibit in the New England Council's Building at 2 P.M. The Governor is making a short address at the exercises presided over by Ralph H. Smith, chairman of the Vermont World's Fair Commission.

On the Governor's arrival at the Boulevard Gate at 10:35 A.M., the Vermont Guard is being joined by the Fair's colorful mounted guard of Haskell Indians. The Governor is escorted to Perylon Hall where he is signing the Distinguished Guest Book.

After reviewing the troops from the garrison at Camp George Washington in the Court of Peace, he will pay an official call on U. S. Commissioner Flynn and Mayor LaGuardia before attending a luncheon in Perylon Hall.

General Motors Employees Are Guests Of Fair Today

General Motors employees from all over the East are converging on the Fair today for a gala celebration of General Motors Day at the Fair.

The festivities are naturally centering around the elaborate General Motors Exhibit and the visitors will enjoy a special private showing of the popular Futurama.

The G. M. employees are being welcomed to the World's Fair by A. J. Schamehorn, general manager of the G. M. Exhibit, and L. P. Wittenberg, director of industrial relations.

A special show in the Casino of Science brings to the holidaying employees a concert by the Glee Club from the Hyatt Roller Bearing Division. Here they will also see a demonstration of the synthetics which may play a very vital part in the "World of Tomorrow."

Following their entertainment in the Highways and Horizons Exhibit, the visitors are making informal tours of the Fair.



A. J. SCHAMEHORN
gen. mgr. of G. M.'s exhibit.

OFFICIAL PROGRAM OF TODAY'S SPECIAL EVENTS

9:00 A.M.—General Motors Day: Employees arrive at IRT-BMT Gate and proceed to General Motors Building. After a trip through the Futurama, the employees attend a special program in the auditorium where they will be welcomed by A. J. Schamehorn, L. P. Wittenberg and Ernest Foss.

10:00 A.M.—Education Center of the Ninth of May Circle: Parade to Italian Pavilion via Constitution Mall to Lagoon of Nations.

10:30 A.M.—Vermont Day: Governor George D. Aiken and official party arrive at World's Fair Boulevard Gate. Party proceeds to Perylon Hall where Governor Aiken signs Distinguished Guest Register.

11:00 A.M.—Vermont Day: Vermont Symphony Orchestra rehearsal in Hall of Special Events. Baseball Class for Boys in Court of Sport.

Contingents from Canadian destroyers Skeena and Saguenay arrive for informal tours of the Fair.

Harry DeBard, national marbles champion, gives demonstration of his prowess at the Glass Center.

11:10 A.M.—Vermont Day: Governor Aiken and official party call on U. S. Commissioner Edward J. Flynn.

12:30 P.M.—Mormon Tabernacle Choir concert, broadcast from Utah, will be amplified at Utah State Exhibit.

1:00 P.M.—De La Salle Band concert at Court of Peace.

Longstreet Memorial Ass'n luncheon in executive dining room of Ford Building.

2:00 P.M.—Vermont Day: Dedication of State Exhibit in New England Council. Program includes address by Governor Aiken and music by Vermont Symphony Orchestra.

Royal Canadian Mounted Police Musical Ride in Court of Peace.

3:00 P.M.—Longstreet Memorial Association military ceremonies and concert at Florida Building.

Vermont Day: Concert by Vermont Symphony Orchestra, Alan Carter conducting, in Hall of Special Events.

Gala Glee Club concert by Associated Glee Club of America in Court of Peace until 7 P.M.

3:45 P.M.—Piano recital by Philip Heffner in Goodrich Arena.

4:00 P.M.—Easton (Pa.) Trombone Choir at Temple of Religion.

4:30 P.M.—Vermont Day: Reception for official party at National Advisory Committees Bldg.

5:30 P.M.—Special performance by World's Fair Wild West and Rodeo.

8:30 P.M.—Laywomen's Retreat Day: Program in the Temple of Religion.

9:30 P.M.—"Spirit of George Washington"—symphony of water, light, flame and music, at Lagoon of Nations.

3500 Voices In Grand Concert

Glee Clubs Bring Famous Singers To Fair

Thirty-five hundred male voices are filling the Court of Peace with a magnificent concert arranged by the Associated Glee Club of America.

Glee Clubs from all over the East and many from the Middle West are here to participate in the great four hour Song fest between 3 and 7 P.M.

In addition to the massed male voices, two distinguished soloists are also here to take part in the concert. Agnes Davis, soprano, and Robert Weed, Metropolitan Opera Association baritone, are lending their voices for the occasion.

Conductors who will lead the glee clubs are Messrs. Royce, Eddy, Dinsmore, and Kasschau.

Following the concert Dr. Sigmond Spaeth, radio's popular song detective, will lead the audience in popular songs. Kenneth S. Clark is conducting this part of the program.

Plan Temple Laywomen's Retreat

(Continued from Page One)

treat Movement was organized under the auspices of the Chicago Cencle with delegates representing retreat houses in all parts of the United States attending. Their Second Conference was held in Boston in July 1937 with delegates not only from the United States but also from Canada. The latest conference includes delegates from Ireland and Brazil.

The purpose of the movement is to spread the practice of making closed retreats among all Catholic laywomen.

DEATH RATE DECLINES

The charts consistently show a sharp decline in the death rate during the century. Perhaps most impressive and thought-provoking is the one in the Science and Education Building. Here the death-rate in these United States is shown to have declined from 35 per 1,000 in 1830 to 11 per 1,000 in 1938.

Whalen Says:

If the Green Mountain folks are sure that "the place to live in the World of Tomorrow is Vermont," they have come to the right place to tell their story.

James Whalen

President of the Fair Corporation.

UNDER THE PALM TREES



The Three Reeve Sisters with their little pal, Al Morrison, stop the crowds at will as they pass the new Schlitz Palm Garden just off Constitution Mall.

Schlitz Palm Garden Result Of 100 Years' Experience

The new Schlitz Palm Garden claims to be the largest restaurant on the Fair grounds. There are seats in the dining room alone for 2,400 persons at one time.

And behind its management is more than a century of experience. The Muller corporation—Charles, Fritz and Walter—have conducted restaurants at 14 world expositions beginning with the one at Omaha, Neb., in 1898.

But the Mullers were in the catering business long before that with grand dad and great-grand dad engaged in that profession in Europe before the family came to the United States, settling in Pasadena, Calif.

Unique feature at the Palm Garden which catches the eye immediately as you walk down Rainbow Avenue from Constitution Mall is the group of entertainers perched upon the open-air stage in the center of the bar.

Performing on the stage are the Three Reeve Sisters and Al Morrison who have just completed a successful two years in South American theaters and night clubs, the greater part of the time in Buenos Aires. The team appears regularly on the Columbia radio chain also.

Shows are given every half hour with imitations of Garbo, Mae West, Durante, Harpo Marx and other stage celebrities as

principal features.

But what is of perhaps even greater importance is that the Schlitz—the beer that made "Schlitz" famous and Milwaukee famous only incidentally—comes to you for only a dime.

Popular prices prevail throughout the Palm Garden beginning at 20 cents for a big, filling sandwich. Drinks other than Schlitz are priced accordingly with nothing for the great rank and file of Fair visitors to be afraid of.

The Palm Garden is under the able management of Lyle Womack, who has been in charge of other large restaurants and bars in California and Panama City.

Tomorrow At the Fair

Crane Company Day.
Esperanto Day.
Toronto Globe & Mail Day.
De La Salle, Oakland Band.
Royal Canadian Mounted Police Musical Ride.

Bluebeard XIV Born In Monkey Colony

There has been a blessed event in the monkey cage at the New York City Building at the Fair.

One of the African green monkeys, Fanny by name, in the zoo section of the Park Department's exhibit, gave birth to a lusty son the other day.

The monkey son is to be christened soon with the name Bluebeard XIV, which Keeper Ger-vase McClure insists is correct according to the latest monkey census.

Royal Mounties Do 'Musical Ride'

The famous "musical ride" of the Royal Mounted Police may be seen in the Court of Peace at 2 P.M.

The musical ride is one of the finest equestrian spectacles in the world. It is to be performed at the Fair by 32 picked members of the Toronto Detachment, mounted on 16 matched greys and 16 matched chestnuts. Except for the lances, all equipment is regulation.

Plays Nyckel-Harpa, Like Hurdy-Gurdy

The Friends of Folkdancing, a group of ten boys and ten girls from Stockholm, are folk dancing in the courtyard of the Swedish Pavilion from 4 to 8 P.M. each day.

One of the four musicians with the troupe always ends his concerts amid a cluster of amused Americans. He plays the nyckel-harpa, a sixteenth century instrument that's like a cross between the hurdy-gurdy and the accordion.

Thinks Big Steel Band Is Musical Saw

An addict of the musical saw who wanted to play a Brahms symphony on the endless band of Swedish steel in the industrial section of the Swedish Pavilion was restrained with difficulty by Hans Abrahamson, the attendant.

The big band, said to be the widest of its kind in the world, measures 31 inches across and is only .048 inch thick. It loops and bends almost double, slithering back and forth in its case all day long by an electro-magnetic arrangement.

You can see what temptation it would be to an honest-to-goodness musical saw-er.

Fair-O-Grats

A machine which combines 25 adding machines in one is demonstrated to all who resitate at the International Business Machine exhibit.

The device is used to sort and total checks from as many as 24 different departments. Each bank or department has its own total while the 25th machine turns up the grand total. Obviously of great use to banks, department stores and the like.

Perhaps it is entirely fitting that in the World of Tomorrow there are no clocks.

Clocks after all, are grossly, mundane things chained inescapably to the present and the dead past. So far there has been no device invented which tells time in the future.

At any rate, attendants throughout the Fair find that requests for the time form a large part of the questions asked them. There are no outside clocks prominently displayed anywhere on the grounds.

At the Pedro the Voder exhibit in the Bell Telephone exhibit, they reduce human speech to only two sounds. One is a swish, much the movies' idea of the sound of a strong wind, and the other is the exact duplicate of an automobile air horn.

It sets one to thinking. Perhaps you wouldn't have much trouble getting through traffic if you could eliminate the "swish" in your own voice and use only the air horn effect. Might even do a good imitation of the motored trains on the Fair grounds: "Me and Mamie O'Rourke".

Along the top of the Old Master's Building are lettered the names of some of the great painters whose works are exhibited inside.

At the end of the line with "Titian", "Veronese", "Tiepolo" and some others is "Guardi". Obviously a mistake. The name is "La Guardia". But does he paint too?

They were tugging at one of the mighty shrubs at the Gardens on Parade entrance. So we stopped and asked.

"We're moving up there," the old foreman with a smiling face explained, pointing several feet away. Then revealing how much the shrubs and flowers are a part of him, he added: "He got his feet wet down here." Meaning that the shrub had been planted too near the pond for its own good.

GOLF and SLEEP at SALISBURY
GOLF 75c BEDS \$1.00
TWENTY MINUTES FORM FAIR
Telephone for Reservations
BAyside 9-6680
On Grand Central Parkway

Today at the Fair

The Official Daily Program of the New York World's Fair 1939.

Published daily, including Sundays, for the duration of the New York World's Fair 1939

THOS. R. GARDINER
Business Manager

Advertising and business office:
33 West 42d Street

Telephone CHickering 4-5570

Editorial office: Communications
Building, New York World's Fair

Subscription rates by mail:

Monthly, \$1.75; season, \$10.00.

'The City', Long-Awaited Film Of the Future, Opens Today

"The City," a four-reel motion picture on community planning, now is being shown to the public in the Little Theatre of the Science and Education Building for the first time since the Fair opened.

Today the picture will be shown at 2:15 P.M., 5 P.M., 5:45 P.M., 6 P.M., 7:15 P.M. and 8 P.M.

At a recent private showing for critics and planners, "The City" was heralded as one of the outstanding films of the year.

Theme of "The City" is sounded in the opening title: "The Age of rebuilding is here; we must build new communities better suited to our needs." Through a rapid transition from the quiet New England village, to the industrial town of slag and smoke, to the modern metropolis of skyscrapers, crowds, and confusion, the effect of the industrial age on the life of the people is vividly portrayed. Final sequence of the picture shows The Green City, an actual planned community where traffic flows smoothly, people work in clean airy factories, and the houses blend into the green landscape.

Presented by The American Institute of Planners and financed by the Carnegie Corporation, "The City" is the result of the combined efforts of an outstanding group of architects and film experts. Ralph H. Steiner and Willard van Dyke directed and photographed "The City." Lewis Mumford wrote the narration and Aaron Copland the musical score.

Chrysler Peribowl For Talking Auto

A huge amphitheatre structure designed to accommodate more than 700 World's Fair visitors at each performance of The Talking Car show has been installed by Chrysler Motors within their World's Fair Exhibit. The structure is known as the Peribowl.

The Talking Car performance is actually a streamlined version of the old vaudeville mind reading act which thrilled theatre audiences throughout the country in the days before the movies learned to talk.

The car, properly commanded by its interlocutor, answers all questions; tells the number of a dollar bill you hold in your hand or the initials carved on your signet ring.

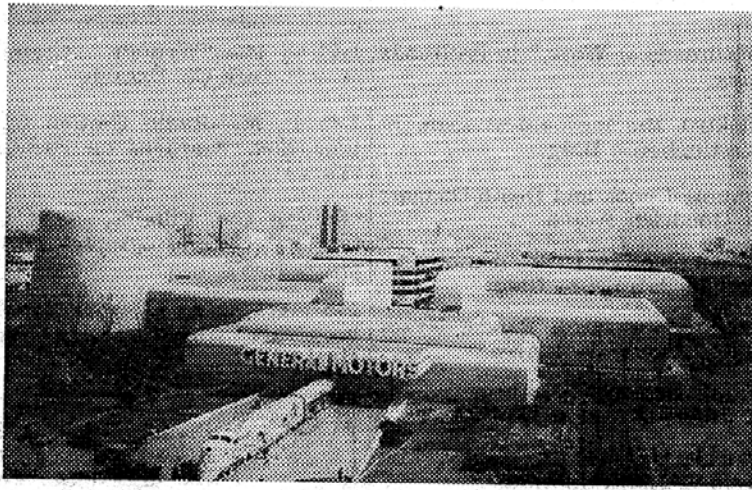
In addition, the car at will can open its doors and invite you to get in; it will roll backwards and forwards; wave its windshield wipers and blush at improper questions until its headlights glow red.

Southern Neighbors Shown In Movies

The Pan-American Hour in the Federal Building this afternoon between 4:30 and 5:30 P.M. is devoted to travelogues on Chile, Peru, and Mexico. The program includes color movies of the scenic, social, and industrial advantages of these countries.

These programs, a weekly feature at the Federal Building, are sponsored by the Pan-American Union to more firmly cement the ties of friendship among the countries of the western hemisphere.

ON THE MUST LIST



General Motors' exhibit is the center today for thousands of employees throughout the East. It is an exhibit few visitors miss.

Exhibit Head Has Many Talents

A. J. Schamehorn's
Skill Produced
G. M. Show

Canals, railroads and power plants as well as motor trucks and automobiles all figure significantly in the background of the directing genius of the General Motors exhibit at the Fair.

Perhaps this accounts for the phenomenal popularity of the exhibit with all Fair visitors and sends them back to the friends at home with "You must see General Motors" almost a chant on their lips.

The man credited with this accomplishment is A. J. Schamehorn who, until he came to the Fair, had complete charge of the proving ground for General Motors where all models of cars and trucks are given the engineer's "third degree."

It was only logical that the man who knew most about the weakness of the modern car should be selected as the one to forecast what the car of the future—the world of tomorrow—should be.

Mr. Schamehorn is a native of Jackson, Mich., born there February 18, 1888. In 1911 he graduated from the University of Michigan as a civil engineer. His first job was a Government inspector on the lock construction then under way at Sault Sainte Marie.

His next move was the Duluth South Shore and Atlantic Railroad, then to the Michigan Central Railroad in the bridge engineering staff. From July 1, 1914, to September, 1915, he did valuation work for Prof. Riggs at Ann Arbor and from that moved to similar work on public service lines in New Jersey.

In the fall of 1915 he joined the sales staff of the Hyatt Roller

Honor General Longstreet, Lee's Second In Command

An almost forgotten Confederate hero of the Civil War is honored at the Fair today with the celebration of Longstreet Memorial Day.

Dr. Louise Ball, president of the Mary Ball Washington Association of New York, is chairman of the program being held today in the Florida State Exhibit at 3 P.M.

A color guard from the United States Army at Camp George Washington under the command of Col. Courtland Parker will be present, and the meeting is being addressed by the Hon. Lambert Fairchild, who will speak on "Lee and Longstreet at Gettysburg."

General James Longstreet, like Lee, to whom he was second in command, saw years of valiant service in the United States Army before he joined the forces of the Confederacy.

He fought in hard Indian campaigns in the West, with Taylor's army of occupation and with Scott in Mexico, and he was severely wounded in the last engagement of the Mexican War while hoisting his regimental flag above the battlements of Chapultepec.

Bearing Co., moved to the Heald Machine Co. in 1919 and came with the General Motors Truck Co. in 1922 as special representative on sales and service.

In 1926 Mr. Schamehorn took charge of the General Motors exhibit at Atlantic City and in 1928 transferred to the proving ground as assistant director, and a year later as director. From that post he was given the World's Fair assignment.

Demonstrate Artistic Skill

Three Artists
Performs In
Art Show

Three presses are in use today in the workshop of the Contemporary Arts Building where a group of noted artists are demonstrating the mechanics of etching, lithography and wood engraving.

Frank Besedick, Theo. Wahl and Isaac Sanger of the Federal Arts Project are giving continuous half-hour demonstrations showing the processes involved from the conception of an idea to the final production of a print.

An etching by Besedick recently was included in the "100 Best Prints of the Year" at the Grand Central Gallery. Sanger's work has been selected several times for inclusion in the British publication, "Fine Prints of the Year."

At 3 P.M. a special demonstration is given by Augustus Peck on monotype printing. Guided tours of the galleries are also scheduled at 11 A.M., 12 noon, 2 P.M. and 4 P.M.

**Y. M. C. A.
BUILDING**

Free Social Rooms Correspondence
Tables Information Service
Wash Rooms
Cafeteria and Table Service
Restaurants Offer Fine Food at
Moderate Prices
MEN AND WOMEN WELCOMED
MEMBERSHIP NOT REQUIRED

WORLD'S FAIR CAMERA FANS — LOOK! —

Three Big Cash Prizes
FIRST PRIZE \$100

Second \$25 Third \$10

For the best pictures submitted in the Aviation Building Amateur Photography Contest. Professionals are ineligible. All entries must depict studies within the Aviation Building.

Contest begins June 25—ends July 25. Judges' decisions will be final and no entries will be returned. Further details, if desired, may be obtained at the Aviation Building ticket counter.

Print sender's name and address on the back of each picture submitted and address all entries care of the Contest Editor.

U. S. AVIATION EXHIBIT, Inc.
World's Fair, New York

Marble Champ Visits Glass Center

11-Year-Old Boy
To Display
His Skill

Harry DeBard, 11-year-old marble shooting champion of the United States, displays his prowess at the Glass Center today at 11 A.M.

Harry, a farmer boy from Coatesville, Pa., won the title at the National Marble Tournament at Wildwood, N. J., the other day. The tournament is an annual affair sponsored by 150 newspapers throughout the country. Harry is the youngest lad ever to win the championship.

One of the prizes Harry won in the championship play was a sack of fiber glass marbles made at the Glass Center at the World's Fair. He will do a bit of plain and fancy shooting with these marbles today. Then he will see how good he is at glass blowing.

As guest of the Glass Center at the Fair today, after he shows how a champion plays, Harry will be taken on a tour of exhibits during the afternoon topped off with a big night in the Amusement Area.

Send a copy of TODAY AT THE FAIR to your friends at home.

Chilean Pavilion

Offers you Native Food,
Wines and Music

Patio Restaurant

Luncheon .75 - Dinner 1.50

Phone NEWton 9-5777
ARMANDO ZEGRI, Manager

RED CROSS SHOES FOR SALE AT THE FAIR

VISIT THE
STUART BROOKS
RED CROSS SHOE STORE
AT THE WORLD'S FAIR
ON CONSTITUTION MALL

\$6.50

AT THE FAIR
OR ANY OF THE
OTHER 6 STORES
LISTED BELOW.

MATCHING ACCESSORIES

Lovely Bags and Gloves
MOJUD HOSIERY Exclusively

AUTHORIZED RETAIL STORES
MANHATTAN—35 EAST 14th ST.
BROOKLYN—302 FLATBUSH AVE.
BROOKLYN—1618 KINGS HIGHWAY
BROOKLYN—1613 PITKIN AVENUE
JAMAICA—194-04 JAMAICA AVE.
ASTORIA—39-38 STEINWAY ST.
ALL STORES OPEN EVENINGS

'Moose' McCormick Does Singleton At Final Baseball School

Regular coach Harry E. "Moose" McCormick holds court alone today at the World's Fair baseball academy at 11 A.M.

The old Giant star of the early McGraw era for a change will not be assisted by any visiting major leaguers in this the last Sunday session of the school. From now on classes take place regularly on Wednesdays and Saturdays at 11 A.M. in the Court of Sport.

McCormick has a varied sport background. After being graduated from Bucknell, where he played football, basketball, and baseball, "Moose" joined up with the Giants. At Bucknell and on the New York club, he was a

team-mate of the famed Christy Mathewson.

For ten long spectacular seasons, the present World's Fair diamond instructor toiled arduously for the gang of McGraw. Upon retirement he became graduate manager and coach of all athletics at Bucknell.

After five years, McCormick moved to West Point where he coached the baseball teams for twelve years.

After McCormick expounds his diamond theories, he promises to answer all the youngsters.

AROUND THE CLOCK TODAY AT THE FAIR



9:00
Gates
open.



10:00 A.M.
Exhibits open.
"Democracy" in
Perishpere begins
continuous showing
to 10 P.M.

Elektro, the mechanical man, in
Westinghouse Bldg.

"Changing the Drill" in Petro-
leum Bldg.

Florida Orange Blossom Quartet
broadcast from Crosley Bldg.
(Mon., Wed., Fri.)

"Pete Roleum and His Cousins,"
Petroleum Bldg.

Circulation and heartbeat demon-
strations, Aetna Life Exh't.

Marionette show, Libby, McNeill
& Libby Exh't.

Manual training demonstrations
in Edison Institute, Ford Bldg.
(Daily exc. Sun.)

10:20 A.M.—"Writer's Cramp," A.
B. Dick Co. Exh't.

10:30 A.M.—Typewriting speed
demonstration, Underwood Elliott
Fisher Exh't.

"Railroads at Work," Railroads
Bldg.

10:45 A.M.—"Foiling the Vil-
lains," "On the Carpet," Addresso-
graph-Multigraph Exh't.



11:00 A.M.
"Pete Roleum and
His Cousins," Petro-
leum Bldg.
Fire demonstrations,
Aetna Life Exh't.

"Writer's Cramp," marionette
show, A. B. Dick Co. Exhibit.

Elektro, the mechanical man, in
Westinghouse Bldg.

Feeding time for quails, Georgia
Bldg.

"Masterpieces of Art"—Museum,
guided tour.

Marionette show in Libby, Mc-
Neill & Libby Exh't.

Carillon concert, Florida Tower.
(Amusement Area.)

Sculpture, print-making, etching,
and lithography demonstrations,
Contemporary Art Bldg. to 5 P.M.

11:15 A.M.—Typewriting speed
demonstr'n, Underwood Elliott
Fisher Exh't.

"Railroads at Work," Railroads
Bldg.

"Miracle Plymouth," Chrysler
Bldg. (Sat. & Sun.)

11:30 A.M.—"Foiling the Vil-
lains," and "On the Carpet," Ad-
dressograph-Multigraph Exh't.

11:40 A.M.—"Writer's Cramp,"
A. B. Dick Co. Exhibit.

Afternoon



12 Noon
Pete Roleum and His
Cousins," movie, Pe-
troleum Bldg.

"Miracle Plymouth,"
the talking car, in Chrysler Bldg.
Typewriting speed demonstration,
Underwood Elliott Fisher Exh't.

Organ recital and address in Tem-
ple of Religion. (Daily exc. Sun.)

Franz Hagel and orchestra at
Casino of Nations, to 2 P. M.

"Railroads at Work," in Railroads
Bldg.

Elektro, the mechanical man, in
Westinghouse Bldg.

Jimmie Lynch and Death Dodgers
at Goodrich Arena.

"Changing the Drill" demonstra-
tion in Petroleum Bldg.

Feeding the Giant Panda, Nyzos
Bldg., Amusement Area.

Circulation and heartbeat demon-
strations in Aetna Life Exh't.

Marionette show in Libby, Mc-
Neill & Libby Exhibit.

"Previews of Progress" in Gen-
eral Motors Bldg.

Sue Hastings' marionettes in
Standard Brands Bldg. (Sat. &
Sun.)

Rocket Port, demonstration of
rocket travel, in Chrysler Bldg.
Carillon concert, Florida Tower.
(Amusement Area.)

Hejnal-Polish horn call, Polish
Pavilion (Sun.)

12:15 P. M.—"Foiling the Vil-
lains," and "On the Carpet," Ad-
dressograph-Multigraph Exh't.

12:20 P. M.—Marionette show at
A. B. Dick Co. Exh't.

12:30 P. M.—Swiss folk dancers
and singers in Swiss Pavilion.

12:45 P. M.—Geo. L. Hossfield in
typewriting speed demonstration,
Underwood Elliott Fisher Exh't.

"Railroads at Work," Railroads
Bldg.



1:00 P.M.
"Pete Roleum and
His Cousins," movie,
Petroleum Bldg.
Fire demonstrations,
Aetna Life Ins. Co. Exhibit.

"Writer's Cramp," marionette
show, at A. B. Dick Co. Exhibit.

Elektro, the mechanical man, in
Westinghouse Bldg.

Marionette show in Libby, Mc-
Neill & Libby Exhibit.

"Previews of Progress" in Gen-
eral Motors Bldg.

Silk reeling demonstration, Jap-
anese Pavilion.

"Miracle Plymouth," the talking
car, in Chrysler Bldg.

"Foiling the Villains," "On the
Carpet," Addressograph - Multi-
graph Exh't.

Sue Hastings' marionettes, Stand-
ard Brands Bldg.

Carillon concert, Florida Tower.
(Amusement Area.)

Motion picture portraying Swed-
en, its countryside and people,
Swedish Pavilion.

1:15 P. M.—Organ recital and ad-
dress at Temple of Religion.
(Sun.)

1:30 P. M.—Geo. L. Hossfield in
typewriting speed deonstration,
Underwood Elliott Fisher Exh't.

"Railroads at Work," Railroads
Bldg.

Milking time for cows, Electrified
Farm.

Dagenham Pipers on Village
Green, Merrie England Village
(Amusement Area.)

Punch and Judy Show on Village
Green, Merrie England Village
(Amusement Area.)

1:40 P. M.—"Writer's Cramp,"
at A. B. Dick Co. Exhibit.

1:45 P. M.—Radio Garden Club
broadcast, "Gardens on Parade."
(Tues.)

"Foiling the Villains," "On the
Carpet," Addressograph - Multi-
graph Exh't.

Florida Orange Blossom Quartet
broadcast from Crosley Bldg.
(Sun.)



2:00 P.M.
Ferde Grofe, with
Novachord Orches-
tra to 5 P.M., Ford
Bld., (Daily, exc.
Mon.)

Jimmie Lynch and Death Dodgers
in Goodrich Arena.

"Murder at Midnight" show, N.
Y. C. Bldg.

"Railroads on Parade" pageant,
Railroads Bldg. (Daily exc. Mon.)

New York City Police Band con-
cert at N. Y. C. Bldg. (Tues.)

"Changing the Drill" demonstra-
tion in Petroleum Bldg.

"Pete Roleum and His Cousins,"
movie, in Petroleum Bldg.

Cuban Orchestra in Cuban Vil-
lage. (Amusement Area.)

"Masterpieces of Art" Museum,
guided tour. (Daily exc. Sun.)

Marionette show in Libby, Mc-
Neill & Libby Exhibit.

"Previews of Progress" in Gen-
eral Motors Bldg.

Sue Hastings' marionettes, Stand-
ard Brands Bldg.

George Rector gives food demon-
strations and lectures, Gas Bldg.
Carillon Concert, Florida Tower.
(Amusement Area.)

2:15 P. M.—Geo. L. Hossfield in
typewriting speed demonstration,
Underwood Elliott Fisher Exh't.

2:20 P. M.—Marionette show, A.
B. Dick Co. Exh't.

Dagenham Pipers on Village
Green, Merrie England Village
(Amusement Area.)

2:30 P. M.—Fashion show of syn-
thetic fabric cos'tumes in Italian
Pavilion. (Daily, exc. Mon.)

Delphian Trio to 5:30 P.M. in
Metropolitan Life Exh't. (Daily
exc. Mon.)

Talks in Temple of Religion.
(Sun.)

"Foiling the Villains," "On the
Carpet," Addressograph - Multi-
graph Exh't.

Silk reeling demonstration in
Japanese Pavilion.

"Railroads at Work," Railroads
Bldg.

Manual training demonstrations
in Edison Institute, Ford Bldg.
(Daily exc. Sun.)

2:35 P. M.—Punch and Judy Show
on Village Green, Merrie England
Village (Amusement Area.)

2:50 P.M.—Ferde Grofe and or-
chestra, Ford Bldg. (Daily ex.
Mon.)

Circulation and heartbeat demon-
strations in Aetna Life Exh't.



3:00 P.M.
Fire demonstrations,
Aetna Life Exh't.
"Writer's Cramp,"
marionette show, at
A. B. Dick Co. Exhibit.

"Miracle Plymouth," the talking
car, in Chrysler Bldg.

"Pete Roleum and His Cousins,"
movie, Petroleum Bldg.

Elektro, the mechanical man, in
Westinghouse Bldg.

Shakespearean comedy at Globe
Theatre.

Geo. L. Hossfield in typewriting
speed demonstration, Underwood
Elliott Fisher Exhibit.

Swiss folk dancing and singing
in Swiss Pavilion.

Marionette show in Libby, Mc-
Neill & Libby Exhibit.

"Previews of Progress" in Gen-
eral Motors Bldg.

Sue Hastings' marionettes, Stand-
ard Brands Bldg.

Carillon concert, Florida Tower.
(Amusement Area.)

Motion picture on Swedish coun-
tryside and people, Swedish Pa-
vilion.

3:10 P.M.—Punch and Judy Show
on Village Green, Merrie England
Village (Amusement Area.)

3:15 P.M.—Ferde Grofe and or-
chestra in Ford Bldg. (Daily
exc. Mon.)

"Railroads at Work," Railroads
Bldg.

"Foiling the Villains," "On the
Carpet," Addressograph - Multi-
graph Exh't.

Carillon concert, Netherlands Pa-
vilion.

3:30 P. M.—Singing Fountains in
Firestone Bldg.

Swiss folk dancing and sing-
ing in Swiss Pavilion.

Billy Rose Aquacade, N. Y. State
Bldg. (Amusement Area.)

Typewriting speed demonstration
Underwood Elliott Fisher Exh't.

Geo. Rector, food lecture and
demonstration, Gas Bldg.

Orange Blossom Quartet concert,
Florida Bldg. (Amusement Area.)

World's Fair Wild West and Ro-
deo (Amusement Area.)

3:40 P. M.—"Writer's Cramp,"
A. B. Dick Co. Exhibit.

Carillon concert at Netherlands
Pavilion.

3:45 P. M.—Geo. L. Hossfield in
typewriting speed demonstration.
"Railroads on Parade," Railroads
Bldg. (Daily exc. Mon.)

Mu Phi Epsilon concert, Good-
rich Arena.



4:00 P.M.
Feeding the Giant
Panda, Nyzos Exh't.
(Amusement Area.)
Circulation and
heartbeat demonstrations, Aetna
Life Exh't.

"Miracle Plymouth," the talking
car, in Chrysler Bldg.

Orchestra Ch. Zumstein in Swiss
Pavilion to 6 P. M.

George Rector gives food demon-
strations, lectures, Gas Bldg.

"Changing the Drill" demonstra-
tion at Petroleum Bldg.

Marionette show in Libby, Mc-
Neill & Libby Exhibit.

"Previews of Progress" in Gen-
eral Motors Bldg.

"Pete Roleum and His Cousins,"
movie, Petroleum Bldg.

Swiss folk dancers and sing-
ers, Swiss Pavilion.

Ferde Grofe and orchestra in
Ford Bldg. (Daily exc. Mon.)

Elektro, the mechanical man, in
Westinghouse Bldg.

"Bowling Green Follies", Old
New York (Amusement Area).
(Week days).

Jimmie Lynch and Death Dodgers
in Goodrich Arena.

Shakespearean comedy, Globe
Theatre. (Amusement Area.)

Trytons, World's Fair Band, con-
cert in Court of Consumers Bldg.

Ernest Wolff's Victor Puppet
Opera Company in Gas Bldg.

Silk reeling demonstration in
Japanese Pavilion.

Sue Hastings' marionettes, Stand-
ard Brands Bldg.

"Foiling the Villains," "On the
Carpet," Addressograph - Multi-
graph Exh't.

Diablito, Cuban Voodoo dance,
Cuban Village (Amusement
Area.)

Folk dancing troupe, Swedish Pa-
vilion, to 8:30 P.M.

4:15 P. M.—Organ recital, Inter-
national Business Machines Exh-
(Bus. Systems Bldg.)

"Railroads at Work," Railroads
Bldg.

Ski jumping, Sun Valley (Amuse-
ment Area.)

4:20 P. M.—"Writer's Cramp,"
at A. B. Dick Co. Exh't.

4:25 P. M.—Dagenham Pipers on
Village Green, Merrie England
Village (Amusement Area.)

4:30 P. M.—Swiss folk dancers
and singers in Swiss Pavilion.

Geo. L. Hossfield in typewriting
speed demonstration, Underwood-
Elliott-Fisher Exhibit.

Feeding the Rainbow and Brown
trout in State of Maine Exhibit.

Fashion show of synthetic fabric
costumes in Italian Pavilion.
(Daily exc. Mon.)

Ice skating show, Sun Valley
(Amusement Area.)

4:40 P.M.—Carillon concert, Flor-
ida Tower (Amusement Area.)

Punch and Judy Show on Village
Green, Merrie England Village
(Amusement Area.)

4:45 P. M.—"Foiling the Villains,"
"On the Carpet," Addressograph-
Multigraph Exh't.

Orange Blossom Quartet concert,
Florida Bldg. (Amusement Area.)



5:00 P.M.
Fire demonstrations
At Aetna Life Ins.
Co. Exhibit.
Sue Hastings mari-
onettes, Standard Brands Bldg.

"Miracle Plymouth," the talking
car, in Chrysler Bldg.

"Railroads at Work," in Railroads
Bldg.

Elektro, the mechanical man, in
Westinghouse Building.

"Pete Roleum and His Cousins,"
movie, Petroleum Bldg.

(Please turn to Page Five)

AROUND THE CLOCK TODAY AT THE FAIR

(Continued from Page Four)

Feeding time for animals on Firestone Farm.

Marionette show in Libby, McNeill & Libby Exhibit.

"Previews of Progress" in General Motors Bldg.

Shakespearean comedy, Globe Theatre. (Amusement Area.)

Carillon concert at Netherlands Pavilion.

"Bowling Green Follies," Old New York. (Amusement Area.) (Sat. & Sun.)

Swiss folk dancers and singers in Swiss Pavilion.

Choral concert in Temple of Religion. (Sun. only.)

Ernest Wolff's Victor Puppet Opera Company, Gas Bldg.

"Writer's Cramp," marionette show, A. B. Dick Co. Exhibit.

Cavalcade of Centaurs performance. (Amusement Area.)

N. Y. A. broadcast, N.Y.C. Bldg (Thurs.)

"Masterpieces of Art" Museum, guided tour.

Motion picture on Swedish countryside and people, Swedish Pavilion.

5:15 P. M.—Typewriting speed demonstration, Underwood Elliott Fisher Exhibit.

Orgatron concert, Florida Bldg. (Amusement Area.)

Ski jumping, Sun Valley (Amusement Area.)

5:20 P. M.—Punch and Judy Show on Village Green, Merrie England Village (Amusement Area.)

5:30 P. M.—Organ recital in Temple of Religion. (Daily exc. Sun.)

Billy Rose Aquacade. (Amusement Area.)

"Foiling the Villains," "On the Carpet," Addressograph - Multigraph Exh't.

Feeding time for quails, Georgia Bldg.

Silk reeling demonstration in Japanese Pavilion.

"Railroads on Parade," Railroads Bldg.

Steve Brodie jumps from Brooklyn Bridge, Old New York Village.

"Bowling Green Follies," Old New York (Amusement Area.)

The "Hot Mikado," Hall of Music.

5:40 P. M.—"Writer's Cramp," marionette show, at A. B. Dick Co. Exhibit.

5:50 P. M.—Dagenham Pipers on Village Green, Merrie England Village (Amusement Area.)

Evening



6:00 P.M.

Twilight concert and address in Temple of Religion.

"Railroads at Work" in Railroads Bldg.

Jimmie Lynch and Death Dodgers in Goodrich Arena.

Elektro, the mechanical man, in Westinghouse Bldg.

"Miracle Plymouth," the talking car, in Chrysler Bldg.

Circulation and heartbeat demonstrations in Aetna Life Exhibit.

Geo. L. Hossfield in typewriting speed demonstration, Underwood Elliott Fisher Exhibit.

"Changing the Drill" demonstration in Petroleum Exhibit.

"Pete Roleum and His Cousins," movie, Petroleum Exhibit.

Marionette show in Libby, McNeill & Libby Exhibit.

"Previews of Progress," General Motors Bldg.

Milking time for cows on Firestone Farm.

"World's Fair Reporter," broadcast from WNYC studio in N. Y. C. Bldg. (Daily exc. Sun.)

"Evening Retreat Ceremony" and Safety Monitor drills, Boy Scout Camp.

6:10 P. M.—Diablito, Cuban Voodoo dance, Cuban Village (Amusement Area.)

Ice skating show, Sun Valley (Amusement Area.)

6:15 P. M.—"Foiling the Villains," "On the Carpet," Addressograph-Multigraph Exh't.

6:20 P. M.—"Writer's Cramp," marionettes, A. B. Dick Co. Exh't.

6:30 P. M.—Franz Hagel and orchestra at Casino of Nations.

Ernest Wolff's Victor Puppet Opera Company, Gas Bldg.

Pipe organ concert in Netherlands Pavilion.

6:35 P. M.—Dagenham Pipers on Village Green, Merrie England Village (Amusement Area.)

6:45 P. M.—Geo. L. Hossfield in typewriting speed demonstration, Underwood Elliott Fisher Exhibit.

"Railroads at Work," Railroads Bldg.

Ski jumping, Sun Valley (Amusement Area.)



7:00 P.M.

Hejnal—historic Polish horn call—at Polish Pavilion.

Fire demonstrations at Aetna Life Ins. Co. Exhibit.

"Miracle Plymouth," the talking car, in Chrysler Bldg.

"Writer's Cramp," marionette show, at A. B. Dick Co. Exhibit.

Swiss folk dancers and singers in Swiss Pavilion.

Sue Hastings' marionettes, Standard Brands Bldg.

Marionette show in Libby, McNeill & Libby Exhibit.

"Previews of Progress" in General Motors Bldg.

Ferde Grofe and Orchestra, Ford Bldg. (Daily ex. Mon.)

Elektro, the mechanical man, in Westinghouse Bldg.

"Pete Roleum and His Cousins," movie, Petroleum Bldg.

New York City Police Band to 9 P.M., N. Y. C. Bldg. (Tues.)

Ernest Wolff's Victor Puppet Opera Company, Gas Bldg.

"Foiling the Villains," "On the Carpet," Addressograph - Multigraph Exh't.

"Bowling Green Follies," Old New York (Amusement Area.)

7:20 P. M.—"Writer's Cramp," marionette show, at A. B. Dick Co. Exhibit.

Shakespearean comedy, Globe Theatre. (Amusement Area.)

7:30 P. M.—Orchestra Ch. Zumbstein, Swiss Pavilion to 11:30 P.M.

Typewriting speed demonstration, Underwood Elliott Fisher Exhibit.

Swiss folk dancers and singers in Swiss Pavilion.

Silk reeling demonstration Japanese Pavilion.

Singing Fountains in Firestone Bldg.

"Railroads at Work," Railroad Bldg.

Delphian Trio to 9:30 P.M. in Metropolitan Life Ins. Co. exhibit.

Ice skating show, Sun Valley (Amusement Area.)

"Gayeties of 1900" in Knickerbocker Inn, Old New York (Amusement Area.)

7:40 P. M.—Carillon concert in Netherlands Pavilion.

7:45 P. M.—"Foiling the Villain," "On the Carpet," Addressograph-Multigraph Exh't.

7:45 P. M.—Mu Phi Epsilon concert, Goodrich Arena.



8:00 P.M.

"Railroads at Work," in Railroads Bldg.

Elektro, the mechanical man, in Westinghouse Bldg.

Carillon concert at Belgian Pavilion.

"Miracle Plymouth," the talking car, in Chrysler Bldg.

Sue Hastings' marionettes, Standard Brands Bldg.

"Welcome Neighbor" broadcast from New Jersey Bldg. (Wed.)

"Writer's Cramp," marionette show, at A. B. Dick Co. Exhibit.

Jimmie Lynch and Death Dodgers in Goodrich Arena.

Circulation and heartbeat demonstrations in Aetna Life Exhibit.

Swiss folk dancers and singers in Swiss Pavilion.

Marionette show in Libby, McNeill & Libby Exhibit.

Carillon concert, Florida Tower. (Amusement Area.)

"Previews of Progress" in General Motors Bldg.

"Changing the Drill" demonstration at Petroleum Bldg.

"Railroads on Parade," Railroads Building.

"Pete Roleum and His Cousins," movie Petroleum Bldg.

Ernest Wolff's Victor Puppet Opera Company, Gas Bldg.

"Foiling the Villains," "On the Carpet," Addressograph - Multigraph Exh't.

Chinese revue, Chinatown Cafe, Old New York (Amusement Area.)

8:15 P. M.—Ferde Grofe and New World Ensemble in Ford Bldg (Daily exc. Mon.)

Typewriting speed demonstration, Underwood Elliott Fisher Exhibit.

Ski jumping, Sun Valley (Amusement Area.)

8:20 P. M.—"Writer's Cramp," A. B. Dick Co. Exhibit.

Shakespearean comedy, Globe Theatre. (Amusement Area.)

8:30 P. M.—Dance music by Franz Hagel orchestra, Casino of Nations.

"Foiling the Villains," "On the Carpet," Addressograph-Multigraph Exh't.

Swiss folk dancers in Swiss Pavilion.

World's Fair Wild West & Rodeo (Amusement Area.)

Diablito, voodoo dance, Cuban Village (Amusement Area.)

Singing Color Fountains in Firestone Bldg.

Billy Rose Aquacade. (Amusement Area.)

Wild West Show and Rodeo performance (Amusement Area.)

Organ recital in Temple of Religion. (Sun. and Thurs.)

Fashion show of synthetic costumes, Italian Pavilion. (Daily exc. Mon.)

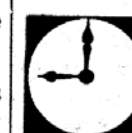
Orange Blossom Quartet, Florida Bldg. (Amusement Area.)

Carillon concert, Netherlands Pavilion.

"Bowling Green Follies," Old New York (Amusement Area.)

8:40 P. M.—Dagenham Pipers on Village Green, Merrie England Village (Amusement Area.)

8:45 P. M.—Ice skating show, Sun Valley (Amusement Area.)



9:00 P.M.

Swiss folk dancers and singers in Swiss Pavilion.

Elektro, the mechanical man, in Westinghouse Bldg.

Sue Hastings' marionettes, Standard Brands Bldg.

"Miracle Plymouth," the talking car, Chrysler Bldg.

Fire demonstrations at Aetna Life Ins. Co. Exhibit.

Marionette show in Libby, McNeill & Libby Exhibit.

Ernest Wolff's Victor Puppet Opera Company, Gas Bldg.

"Previews of Progress" in General Motors Bldg.

"Pete Roleum and His Cousins," movie, Petroleum Bldg.

(Please turn to Page Seven)

Remington Rand
Welcomes you!
at the
BRIDGE of WINGS

ELECTRICAL PRODUCTS BLDG.
REMINGTON RAND Hall

MAIL copies to your friends

OFFICIAL GUIDE BOOK

The only publication containing complete information and an accurate description of the New York World's Fair. The encyclopedia of the greatest exposition of all times. A convenient pocket-size edition for general use; editions of larger size and with finer bindings for those desiring ones more suitable for the library and bookshelf. Also available translated into Spanish, French, Italian, German, Yiddish and Polish.

ENGLISH EDITIONS

Pocket size, paper cover\$0.25 (Add 10c for mailing)
Regular Edition, paper cover\$0.50 (Add 15c for mailing)
Regular Edition, board cover\$1.00 (Add 15c for mailing)
Library Edition, cloth binding\$2.00 (Add 15c for mailing)
Library Edition, Imitation Leather binding...\$3.50 (Add 15c for mailing)
De Luxe Edition, Genuine Leather binding...\$5.00 (Add 15c for mailing)

TRANSLATED EDITIONS

Regular Edition, paper cover\$0.50 (Add 15c for mailing)
Library Edition, Hard cover\$1.00 (Add 15c for mailing)

OFFICIAL SOUVENIR BOOK

A modern stream-lined book of "tomorrow." A pictorial tour of the fair with nearly 150 pages—11 x 14 inches in size—many in full color. You will consider this unusual book as a prized and permanent keepsake. Designed by America's leading designer, Donald Desky. Edited by Dr. Frank Monaghan. In addition to the regular one dollar edition a choice of finer bindings is available.

Regular Edition, paper cover\$1.00 (Add 10c for mailing)
Regular Edition, Hard cover\$2.00 (Add 15c for mailing)
Library Edition, Cloth binding\$3.50 (Add 15c for mailing)
Library Edition, Imitation Leather binding...\$5.00 (Add 15c for mailing)
De Luxe Edition, Genuine Leather binding...\$10.00 (Add 15c for mailing)

Leave names and addresses of friends, to whom you wish to mail copies of the above publications, or any other publications listed in the "Book Program of the Fair," at any of the "Guide Book" booths at fair grounds—they will be mailed direct from World's Fair postoffice—or you may send your order to

Exposition Publications, Inc.
33 WEST 42nd STREET
NEW YORK, N. Y.

STATES' EXHIBITS IN COURT OF STATES AT FAIR

Without leaving the Fair Grounds a visitor can experience all the thrills of a cross-country tour of the United States with an extended visit to the Court of States just south of the International Zone. Here in the exhibits of the various States of the Union is a cross-section of the country, each section portrayed with the skilled artistry of those who know it best. The Court of States is also a mecca for tourists who come to register at the exhibit of their home state.

ARIZONA

Arizona's exhibit, keyed to the spirit of Youth, takes its starting point from the fact that Arizona is the youngest state in the Union. The exhibits point to the great strides made in its evolution from Apache wigwags to modern buildings and agriculture made possible through irrigation.

The manager and her assistants, all dressed in typical western attire take great pride in the murals decorating the exhibit which depict scenes of Arizona mining, schooling, cattle-raising, dude ranches sports road and dam building, national monuments, and scenic wonders such as the Petrified Forest and the Grand Canyon.

ARKANSAS

Taking its motif from its chief source of wealth, Arkansas's Exhibit is devoted largely to the growing and handling of wheat, corn, cotton, rice, oats, white and sweet potatoes, hay, and a variety of fruits. Adequate display is also made of Arkansas's famous Hot Springs. Forty seven in number, these are the only Government owned and operated hot springs in the United States.

CONNECTICUT

See NEW ENGLAND EXHIBIT.

FLORIDA

Composed entirely of native material, Florida's building rises to a beautiful tower containing a carillon which rings out over the Fair. In the evening the tower becomes a golden shaft surmounted by the name "Florida" in electric letters.

Exhibit units line the walls of the building reproducing Florida's points of interest, her advances in the arts, sciences and industry, and her vast natural facilities for healthful recreation.

At the fruit juice bar in the patio, visitors may drink Florida orange and grapefruit juices, and eat orange sherbet.

GEORGIA

This exhibit, housed in a building that is an excellent example of the traditional architecture of the State, is a paradise of well documented educational information.

Various exhibits display gold coins and nuggets, and a complete line of minerals and ceramics. The abundant wild life that is a major attraction of the state is illustrated by a covey of quail displayed in their natural habitat. These quail are fed twice daily and the feeding has become a major attraction at the exhibit. An exhibit showing the conversion of scrub pine into wood pulp and paper portrays an industry which promises to contribute to the prosperity of the State.

ILLINOIS

Oil paintings 8 feet by 10 feet made from aerial photographs of the State create the illusion, on entering the Illinois exhibit, of looking out over Illinois from the center of the State.

Featured in the center of the exhibit is a scale model of the City of Chicago which is the largest single exhibit in the building. In this model every one of Chicago's 450,000 buildings has been made to scale and placed in location. It is fully detailed and

shows public buildings, parks, waterways, railroad terminals and yards, elevated systems, and utility networks.

Another interesting scale model is of the first capitol of Illinois, Kaskaskia, washed away when the Mississippi changed its course. It has been reconstructed from an old photograph.

MAINE

One's first impression upon entering the Maine Exhibit is of the quiet peacefulness of the north woods, the fragrance of which is born to you the moment you cross the threshold. Once inside a realistic panorama of the state is spread before you. At one side the waves of the ocean roll onto a clean sandy beach; a mountain stream, in the clear pools of which are trout that will bring a gleam to the eye of any fisherman, flow through growing forests and empty into a broad river.

MASSACHUSETTS

See NEW ENGLAND EXHIBIT.

MISSOURI

The Missouri Exhibit illustrates the story of the State's agricultural resources, her manufacturing industries and her excellent transportation system. Essentially an agricultural State, Missouri has by no means neglected to display her other activities. Manufacturing plays an important part in the exhibition, while her rivers and forest combine to make an ideal sports and playground.

NEW ENGLAND COMBINED EXHIBIT

The entire New England Exhibit, housing the individual exhibits of the five participating states, New Hampshire, Vermont, Massachusetts, Rhode Island and Connecticut, is built around a 130 foot replica of a full-rigged, three-masted merchantman lying at dock. The towering masts, spars and rope rigging of the merchantman are visible over the greater part of the Fair Grounds.

To one side of the ship is the merchants warehouse which houses the exhibits of New Hampshire, Vermont and Connecticut, and on the other side is a two-story structure housing the exhibits of Massachusetts and Rhode Island.

NEW HAMPSHIRE

See NEW ENGLAND EXHIBIT.

NEW YORK

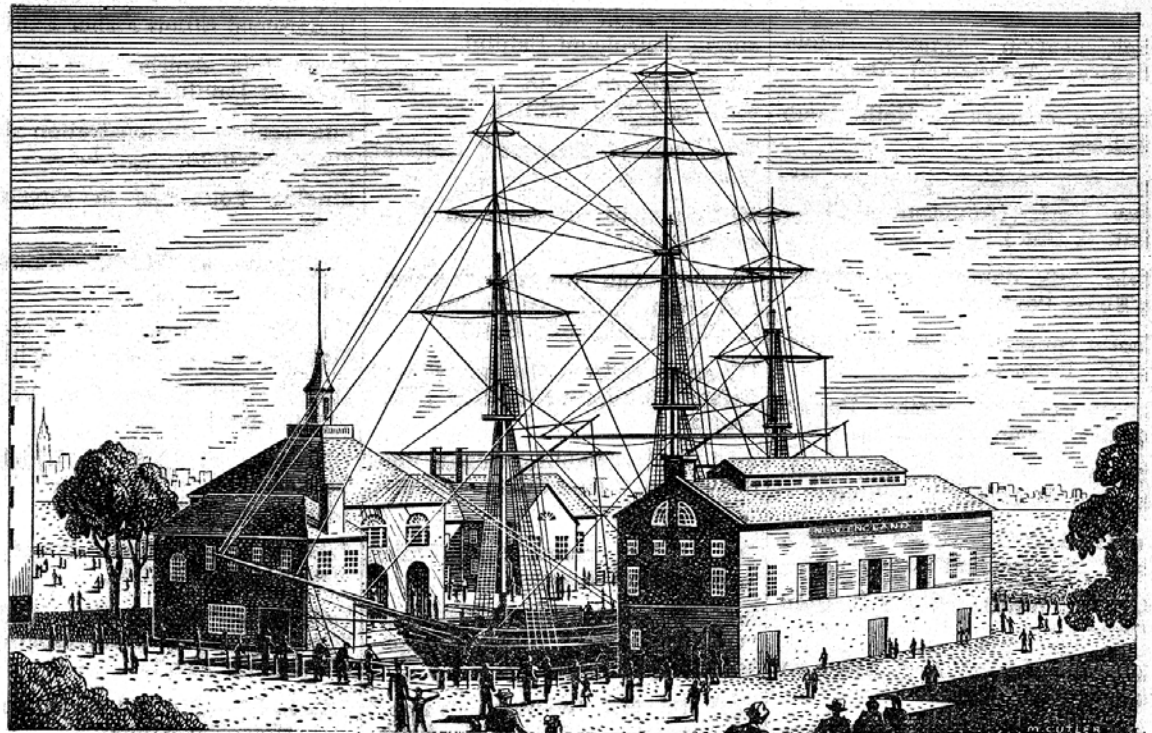
New York, host to the Fair has appropriated the largest sum of money provided by any state for its participation in the Fair. Fountain Lake Amphitheatre was erected as a permanent outdoor theatre to remain after the Fair closes, and in addition a temporary building has been erected directly in front of it to house the Empire State's exhibit.

Below the floor level in the lobby of the exhibit building, is a large physical relief map of the state whereon electric lights pick out the various counties, important cities, highways, rivers, lakes, mountains, parks and scenic features.

NORTH CAROLINA

Imagination and native resourcefulness have gone into the

RIDING AT ANCHOR



The New England Council Exhibit in which the Rhode Island exhibit is housed. A convincing reproduction of a typical Colonial New England harbor scene. The realistic three-master is rigged by the Plymouth Cordage in use on American ships since the days of the clipper ships.

North Carolina Exhibit. Confronting the visitor as he enters the exhibit is a huge artist's palette on which is mounted a perfectly balanced sphere bearing all the many hues of the spectrum. This, the Theme Center of the exhibit, denotes the perfectly balanced state. The exhibit itself then is pointed to prove that North Carolina is the perfectly balanced state, in agricultural possibilities, industry, resources, and recreational facilities.

PENNSYLVANIA

Housed in a replica of Philadelphia's famous Independence Hall, Pennsylvania has one of the most comprehensive exhibits at the Fair. Hanging in the center of the entrance tower is a huge model of the Liberty Bell, while to the left and right are the flags of all the states. The main portion of the exhibit is called the Hall of Democracy. Here in a gigantic photo mural is pictured a peaceful Pennsylvania landscape. At either side of this central hall are the Hall of Tradition and the Hall of Progress and the exhibits in each carry out the theme implied by the name.

RHODE ISLAND

See NEW ENGLAND EXHIBIT.

TENNESSEE

...Simplicity and restfulness is the keynote of the Tennessee Exhibit. Here there is no effort to force the attention of the visitor. Around the walls of the exhibit and on four illuminated pylons are beautiful photographs showing the varied attractions of the state. The order of the pictures is exceptionally well carried out and the visitor can linger over those which interest him without the ever recurrent urge to get on to see something else in which he might not have so much interest.

UTAH

The State of Utah by means of diaramas reproduces for visitors the many agricultural and mining

industries for which the state is noted.

VERMONT

See NEW ENGLAND EXHIBIT.

VIRGINIA

The State of Virginia has chosen to maintain the dignity of tradition bolstered by just a touch of the modern in their exhibit at the Fair. The State's exhibit, housed in a room that is featured by its quiet air of dignity and calmness is composed largely of volumes of photographs which visitors can browse through at their leisure. As one enters the Exhibit he is greeted by the cool sound of a trickling fountain. This fountain, centered in the exhibit hall is a sculptured piece representing the broad rivers of Virginia. Around the fountain are deep comfortable lounge chairs and low coffee tables bearing ash trays for the accommodation of the visitors.

WASHINGTON

The Washington Exhibit has taken as its motto "The Evergreen Empire" and its building is decorated with native woods. Within the building, in three dimensional displays the grandeur of the state is brought into brilliant focus. The game fish in its swift-running streams are here for you to see. You can also see, in actual operation, the building of the Grand Coulee Dam on the Columbia River.

WEST VIRGINIA

The interior of the West Virginia Building is entirely constructed with native wood, impressing the visitor with the vast timber wealth of the state. Around the walls of the exhibit hall are beautifully colored photo-murals showing the scenic beauty of the mountains that cover a large part of the state, and centered in the great hall is displayed the largest piece of bituminous coal that has ever been mined.

France Holds Colonial Exhibit

Life In Overseas Lands Depicted In Its Annex

The French Exhibit at the World's Fair is not limited to the white building on Constitution Mall known as the French Pavilion.

Nearby is an annex dedicated to France Overseas—her colonies, territories, and protectorates. Here are shown the aims and achievements of France in the development of her colonial possessions.

On the ground floor is an information stand, where ready attendants are prepared to help plan every detail of a complete tour of the French possessions on the spot.

STRESS COLONIES

Interesting phases of travel in the colonies are described in the annex. In the Great Hall is the Planisphere, a giant world map. Here, at a glance, is the geography of all overseas possessions of France, as well as outlined travel routes by land, sea or air. The Planisphere was modeled after a smaller map at the Paris Exhibition.

Though the annex itself is relatively small, the panoramic displays of landscapes, villages, historical towns, and even the very costumes worn by the peasants, seem to expand the confines of the building to Colonial France.

Mail TODAY AT THE FAIR to the folks back home.

AROUND THE CLOCK TODAY AT THE FAIR

CONTINUOUS PROGRAMS

Unless otherwise noted, these entertainment features run continuously from 10 A. M. to 10 P. M.

(Continued from Page Five)

Milking time for cows, Electrified Farm.

Geo. L. Hossfield in typewriting speed demonstration, Underwood Elliott Fisher Exhibit.

Feeding time for Giant Panda, Nykos Exh't (Amusement Area).

9:15 P. M.—"Foiling the Villains," "On the Carpet," Addressograph-Multigraph Exh't.

9:20 P. M.—Shakespearian comedy, Globe Theatre (Amusement Area).

"Sacrificio," Cuban Village (Amusement Area).

9:30 P. M.—Swiss folk dancers and singers in Swiss Pavilion. Water-sound-flame-fireworks display on Lagoon of Nations.

Ski jumping, Sun Valley (Amusement Area).

9:35 P. M.—Dagenham Pipers on Village Green, Merrie England Village (Amusement Area).

9:40 P. M.—Ferde Grofe and Orchestra, Ford Bldg. (Daily ex. Mon.)

Carillon concert, Florida Tower (Amusement Area).

9:45 P. M.—Geo. L. Hossfield in typewriting speed demonstration, Underwood Elliott Fisher Exhibit.

"Gayeties of 1900" in Knickerbocker Inn, Old New York (Amusement Area).

10:00 P. M. Exhibits close. Fireworks on Fountain Lake in Amusement Area.

Last showing of "Democracy" in the Perisphere.

Steve Brodie jumps from Brooklyn Bridge in Old New York Village.

Ice skating show, Sun Valley (Amusement Area).

Chinese revue, Chinatown Cafe, Old New York (Amusement Area).

"Bowling Green Follies", Old New York (Amusement Area).

10:15 P. M.—Carillon Concert, Florida Tower (Amusement Area).

10:30 P. M.—The "Hot Mikado," Hall of Music.

World's Fair Wild Wets and Rodeo (Amusement Area).

10:45 P. M.—Wild West Show and Rodeo performance (Amusement Area).

Ski jumping, Sun Valley (Amusement Area).

Shakespearian comedy, Globe Theatre (Amusement Area).

11:15 P. M.—Ice skating show, Sun Valley (Amusement Area).

11:30 P. M.—Steve Brodie jumps from Brooklyn Bridge in Old New York Village (Amusement Area).

12 Midnight — Chinese revue, Chinatown Cafe, Old New York (Amusement Area).

Ski jumping, Sun Valley (Amusement Area).

Ice Skating show, Sun Valley (Amusement Area).

12:15 P. M.—"Gayeties of 1900" in Knickerbocker Inn, Old New York (Amusement Area).

12:30 A. M.—Steve Brodie jumps from Brooklyn Bridge in Old New York Village (Amusement Area).

"Bowling Green Follies", Old New York (Amusement Area).

Aetna Life Exhibit:

Motion pictures on home safety, fire prevention and highway safety.

American Potter Exhibit:

Tom Parker, pottery "thrower", makes vases by manipulating clay on potter's wheel.

Beech-Nut Building:

"The Biggest Little Show on Earth," miniature circus and parade.

Bell Telephone Building:

Pedro the Voder, synthetic voice operated electrically.

Long distance demonstration with drawings for free calls to any listed telephone in U. S.

"Voices of the Visitors," voice reproduction demonstration.

Borden Exhibit:

Cows being milked on the Rotolactor.

Chrysler Building:

Rocket Port—history of transportation with demonstration of rocket travel of the future. (Half hourly from 11 A. M.)

"In Tune with Tomorrow," first full 3-dimensional polaroid movie with sound, viewed through polaroid lenses. (Half hourly from 10:30 A. M.)

"Miracle Plymouth," the talking car that answers questions, performs feats by magic. (Half hourly from 10:30 A. M.)

Consolidated Edison Building:

The "City of Light," a colored, lighted, animated architectural model of Metropolitan New York, with 12-minute performances dramatizing the story of a 24-hour period in the "City of Light."

Maison Coty:

"Symphonies in Fragrance," movie in Maison Coty Theatre.

duPont Building:

"Wonder World of Chemistry"—chemists blend perfumes made from coal and create solids out of gasses, transmit cold light around curves by "Lucite" plastic. Pest control laboratory.

The Tatterman Marionettes dramatize chemistry's contribution to life. (Half hourly from 10:45 A. M.; continuous 2 to 8:30 P. M.; half hourly from 8:30 to 10 P. M.)

Eastman Kodak:

"Cavalcade of Color." (Continuous from 12 noon to 10 P. M.)

Eastern States Ice Exhibit:

Normal size girl reduced to 6-inch height in simulated block of ice; travels by Jack Frost and Raindrop. (Half-hourly from 10:30 A. M.)

Electric Utilities Exhibit:

"Forward March of America," demonstration of coordination of light, sound and color in the Rocket Room.

Equitable Life Exhibit:

Concert by Muzak in "Garden of Security." (Every 15 minutes.)

Federal Building:

"Land of Liberty," moving picture. (Continuous, 2 to 6 P. M.)

Firestone Building:

Tire manufacturing—one tire turned out every four minutes.

Ford Building:

A scenic ride down the half-mile elevated highway of the future in brilliantly colored stock cars.

General Electric Building:

"House of Magic"—demonstrations of developments in scientific research. (Half hourly from 11 A. M.)

Steinmetz Hall—10,000,000 volts of man-made lightning discharged. (Half hourly from 12 noon; Sat. & Sun. continuous from 11 A. M.)

Television Studio—visitors interviewed and televised. (Half hourly from 1 P. M.; Sat. & Sun. from 11 A. M.)

General Motors:

"Futurama," carry-go-round takes visitors on tour through the U. S. of 1960.

Glass Center:

Glass blowing and weaving demonstrations. (Half hourly.)

Goodrich Building:

Guillotine tire test. (Half hourly.)

Heineken's on the Zuider Zee:

Music by Ray Benson and orchestra. (From 1:30 to 7:30 P. M.)

Music by Dick Kuhn and orchestra. (From 7:30 P. M. to 1:30 A. M.)

Household Finance Exhibit:

"A Heap-O' Living" and Happy Ever After," movies. (Continuous from 2 to 7:30 P. M.; Sat. & Sun. from 1 to 8:30 P. M.)

Imperial Pearl Syndicate Exh't:

Pearl Farm: Native divers explain diving for pearl-bearing oysters; demonstration of culture pearls are grown. (Consumers Bldg.) (Half-hourly from 11 A. M. to 9 P. M.)

Jewish Palestine Pavilion:

The Holy Land of Yesterday and Tomorrow, animated diorama showing changes in Palestine in last 25 years.

Loose-Wiles Biscuit Exhibit:

Variety program of singing, dancing, boxing by troupe of midgets.

International Business Machines Exhibit:

Demonstration of business machines; contemporary art of 79 countries; incidental organ music.

Lucky Strike Building:

"The Story of Lucky Strike," movie showing manufacture of cigarettes.

MacFadden Publications:

"Til Tell the World," moving picture. (Every 45 minutes; Sat. & Sun. half hourly.)

Medical Soc. of Queens Exhibit:

Demonstration of Chest X-ray.

(Medicine and Public Health Bldg.) (Hourly.)

Medicine & Public Health Bldg.:

Demonstrations by the blind in sculpturing, weaving, braille and typing.

Metropolitan Life Exhibit:

"Once Upon a Time," color cartoon movie dealing humorously with safety problems. (Continuous from 10 A. M. to 2 P. M. daily ex. Mon.; from 3 to 9 P. M. Mon.)

"A New Day," movie on prevention and cure of pneumonia. (Continuous from 5:30 to 7:30 P. M.; Mon.: from 10 A. M. to 3 P. M.)

"Man Against Microbe," movie on miniature screen. (5:30 to 7:30 P. M. daily; 10 A. M. to 3 P. M. Mon.)

National Biscuit Exhibit:

"Mickey's Surprise Party" and "Around the Clock with the Cues," technicolor movies.

Nykos Building:

Electric eel producing 500 volts operates electrical devices such as railroad train, lamps, radio. (Half hourly.)

R. C. A. Building:

Hall of Television: Telecasting of public from gardens every 3 minutes; spot news transmitted from telemobile units in Fair grounds. Television and radio devices on display. Demonstration of International communication, radio equipment.

Timken Roller Bearing Exh't:

Roller skating on 9-foot platform 7 feet above the exhibit.

U. S. Steel Exhibit:

"Steel Thinks Ahead": Under a stainless steel dome of "inside out" building, steelmen take visitors back stage in the drama of steelmaking.

"Hall of the Future" portrays housing, farm, city, factory and transportation as they may be some day.

"Hall of Research": Demonstration shows five different properties of steel.

Westinghouse Building:

"The Battle of the Centuries"—Mrs. Drudge vs. Mrs. Modern. (Every 20 minutes from 10 A. M.)

Television studio where Fair visitors are telecast.

Sunbeam Exhibit:

Sunbeam Magic Mirror Theatre—an electric appliance show by combination of living persons and animated characters. (Every 40 minutes.)

Universal Camera Exhibit:

Comedy movies. (Every 10 minutes.)

Wilbert Products Exhibit:

"Manhattan Mystic," the mind of tomorrow, gives demonstration of modern thought transmission. (Continuous from 7 to 10 P. M.; Sat. & Sun. from 10 A. M. to 10 P. M.)

Ancient Viking Manuscripts Link Modern World To Past

The Viking Sagas, some of the most interesting manuscripts in existence, are prominently displayed in the Iceland Pavilion in the Hall of Nations. These manuscripts have become the heart of North European literature, due to the fact that their preservation during the dark ages make them the only authoritative link between ancient Europe and the Renaissance.

These manuscripts are being exhibited for the first time in the United States. They date back to an era before Christianity was known in the north of Europe and are considered priceless. The Sagas are recorded on leather and date back earlier than the fourteenth century. The most interesting from the American viewpoint is the original Flatey book which contains the account of the discovery of Vinland by Lief Erikson.

An effort was made to bring this valuable manuscript to the United States several years ago and although the sponsors of the move were willing to insure it to the extent of \$1,000,000 and to guarantee its safe return, no arrangement could be reached.

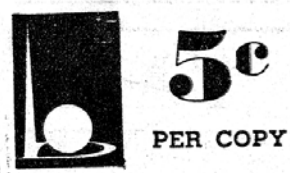
An interesting incidental note is the fact that although in American history we are used to seeing the name of the famous Viking spelled "Lief" Erikson, on the authority of Hon. Thor Thors, Icelandic Member of Parliament, the

proper spelling of his name is Lief Eriksson.

The statue of Lief Eriksson standing in front of the Iceland Pavilion was bought with a fund raised by voluntary contributions from people of Icelandic origin in Canada and the United States. This statue is an exact reproduction of one presented to the Government of Iceland by the United States government in 1930. The occasion for the presentation of the statue was the 1,000th anniversary of the founding of the "Althing" the parliamentary body of Iceland. This is the oldest parliamentary body in the world that has been in continuous existence.

Material for the construction of the interior of the Iceland Pavilion was brought to New York from Iceland in order to assure its authenticity.

Copies of TODAY AT THE FAIR make good souvenirs. Send one back home.



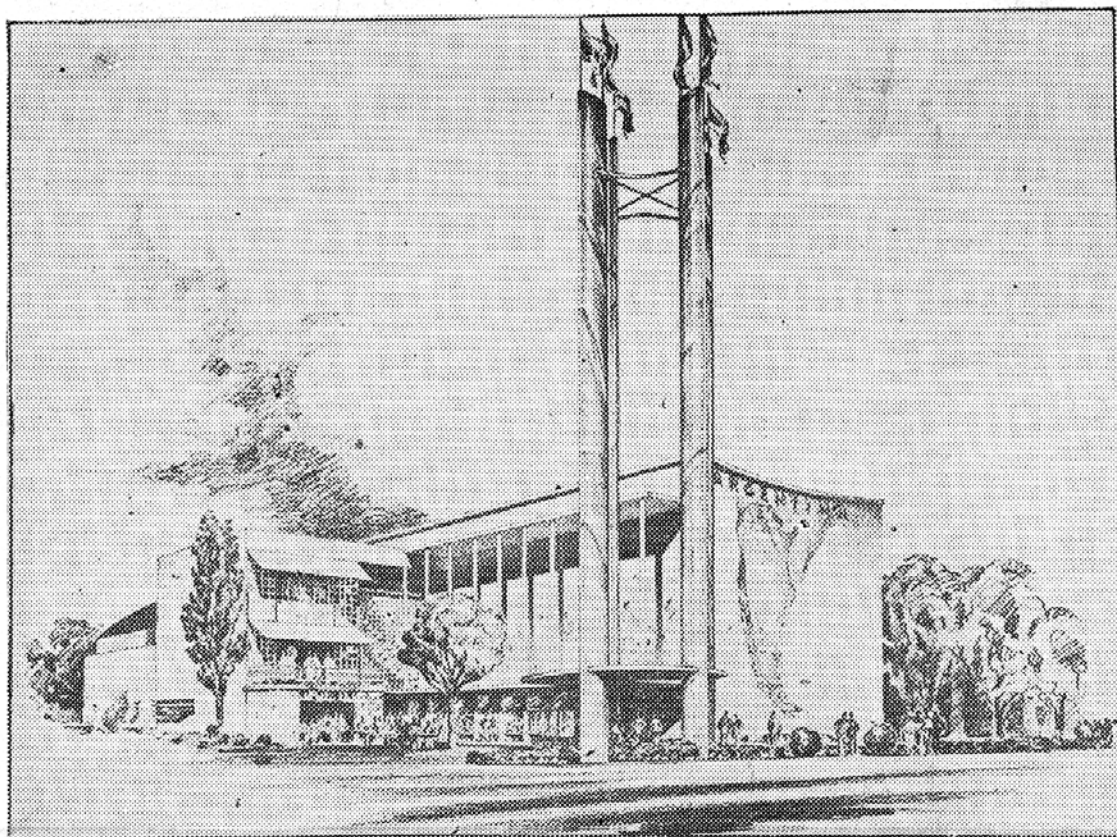
TODAY AT THE FAIR

Keep Posted on what-where-when things are happening in the Fair Grounds in **TODAY AT THE FAIR**

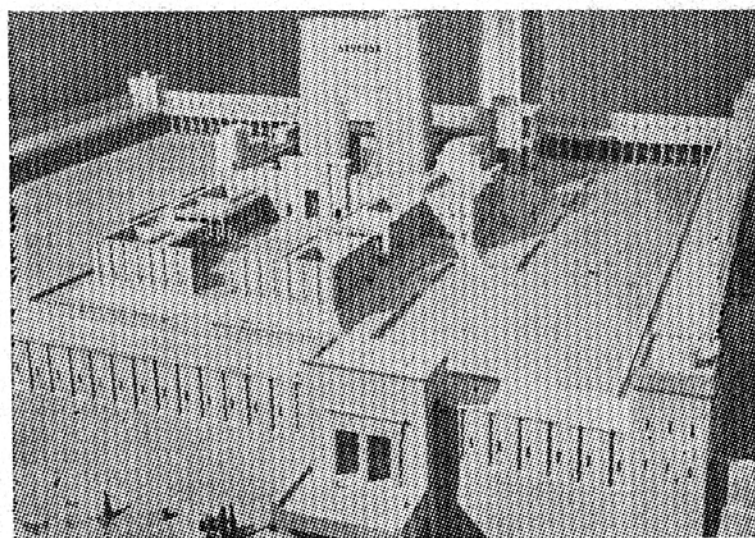
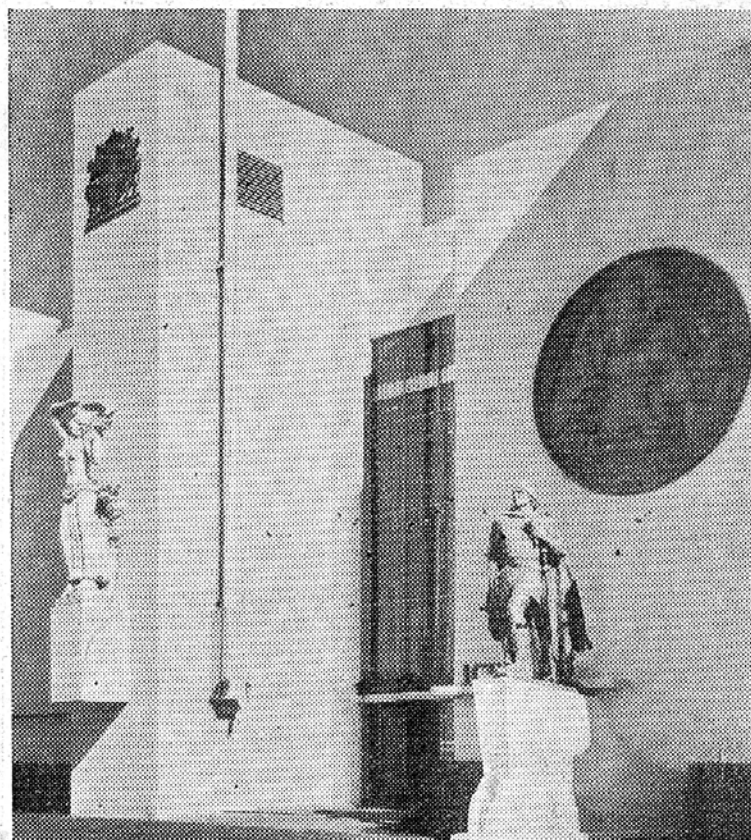
OFFICIAL DAILY PROGRAM OF THE NEW YORK WORLD'S FAIR 1939

Complete News and Pictures...Published Every Day... Sunday, July 2, 1939... No. 61

ALL ENDS OF THE EARTH MEET AT THE FAIR



Opposite ends of the earth are represented in the Pavilion of the Argentine Republic (above) and that of northerly Iceland at the right



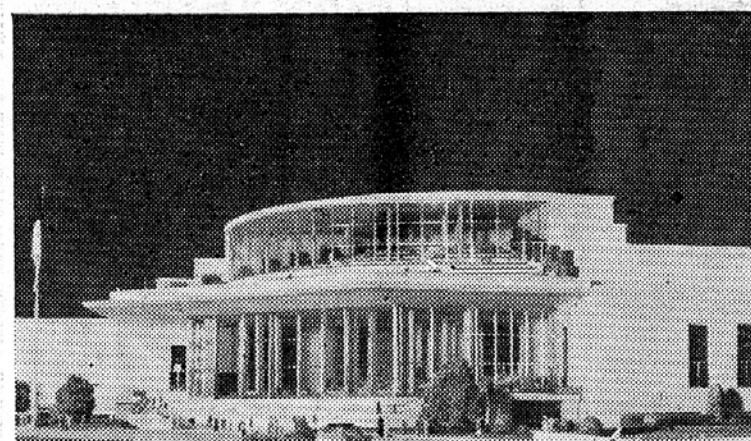
With the replica of wise old King Solomon (above) in the Jewish Pavilion, we travel back into history as well



Little Belgium is impressively represented with a Pavilion (above) built entirely of materials imported from that country



As one might expect, Great Britain's Pavilion occupies a commanding place in the Court of Nations



The French Pavilion has already won distinction because of its graceful terraces